



**REPROCOver**

Sustainable Solutions



# REPROCOVER Building

A green-tinted photograph of a railway track. The tracks run from the bottom center towards the top center, where a train is visible in the distance. The background shows some buildings and utility poles. The overall scene is hazy and has a strong green color cast.

NOTHING IS LOST, NOTHING IS WON,  
EVERYTHING HAS TO IMPROVES

*From the IDEA to the production*



OUR SOLUTIONS

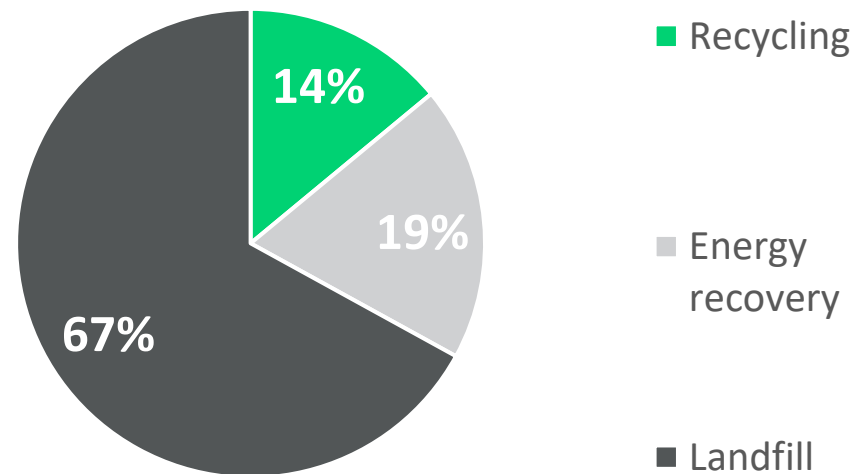
# 3 goals

- GIVE PRIORITY TO SHORT CIRCUIT
- INCREASE THE RECOVERY OF WASTE
- DEVELOP EASY SOLUTIONS TO PROBLEMS



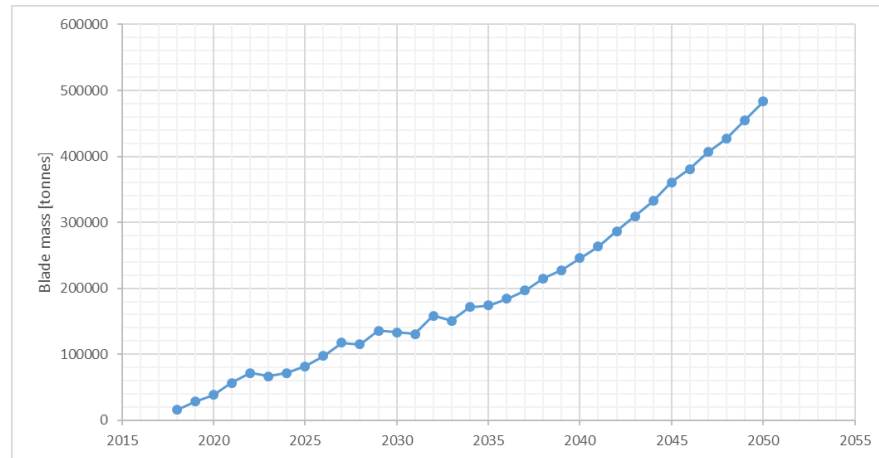
# 1 problem

60 MILLION TONS PRODUCED IN 2016



Source : [Plastic Europe Market Research Group 2017](#)

# R PROBLEMS

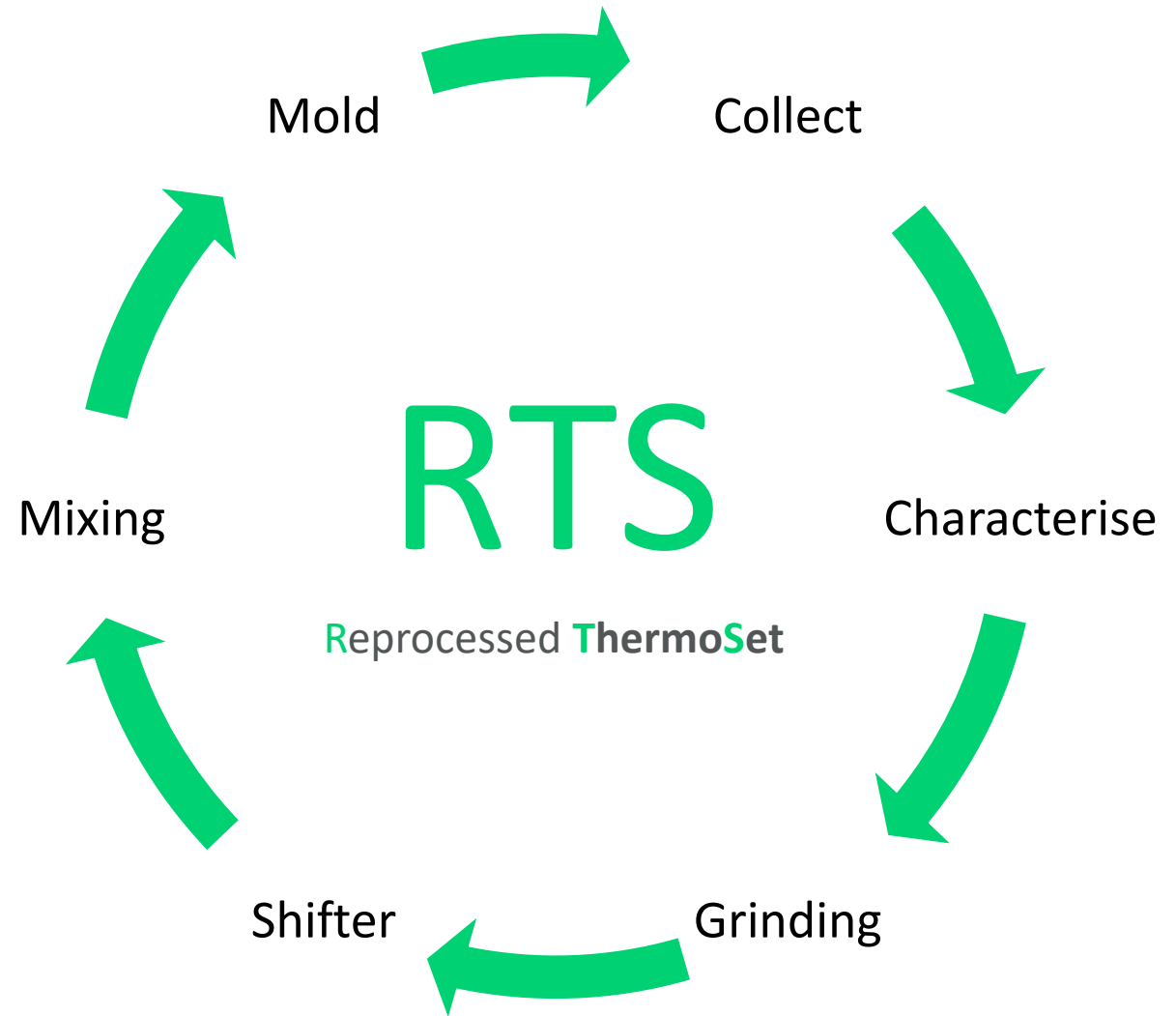


*\*Pu Liu, C. Y. (2017). Wind turbineblade wastein 2050. WasteManagement, 229-240.*



**Landfill**

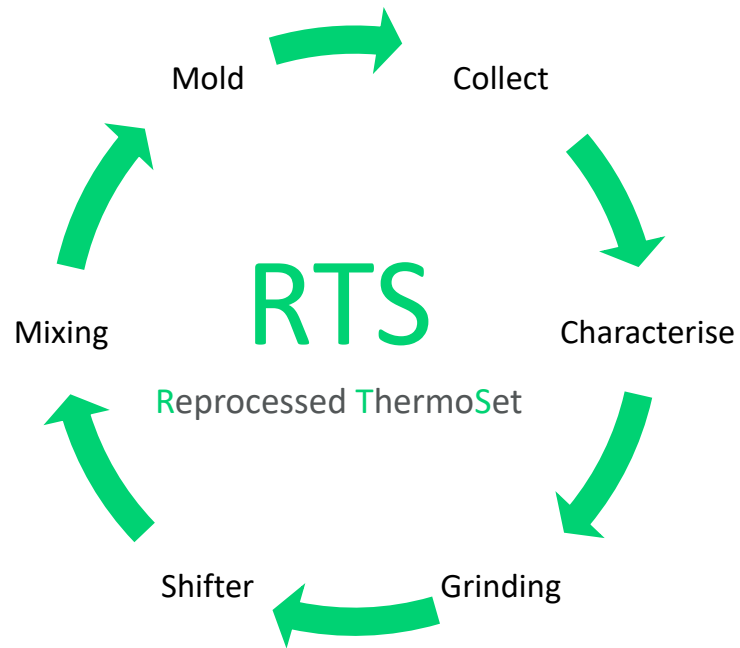
FABRICATION PROCESS





# OUR SOLUTIONS

Reprocover develops and produces precast solutions made from recycled thermosetting plastics (RTS)



CABLE GUTTERS



SURFACE BOXES / ACCESS CHAMBER



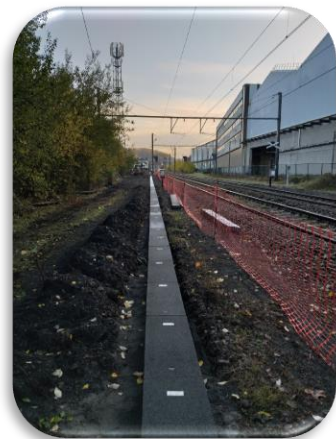
LEVEL CROSSING



URBAN DEVELOPMENT



CUSTOM SERVICE





CUSTOM SERVICE

1

CRUSHING

Collect of waste and crushing

CHARACTERIZATION

Study of collected material

2

3

3D MODELING

Creation of custom products

SUSTAINABLE SOLUTION

Circular economy logic

4

Let's create together



## PROBLEMS AND OPPORTUNITIES

### Problems

- ❑ Cost of sustainable solutions
- ❑ Lack of standard legislation for waste & sustainable product
- ❑ The waste world is too secretive

### Opportunities

- ❑ Subsidies for the development
- ❑ Shortage of raw material
- ❑ Shortage of labor
- ❑ More difficult to export waste



**FIND YOUR  
SUSTAINABLE  
SOLUTION**



CONTACT

[info@reprocover.eu](mailto:info@reprocover.eu)  
[www.reprocover.eu](http://www.reprocover.eu)

Avenue André Ernst 19  
4800 Verviers