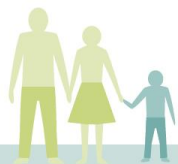




Confederation of European Forest Owners



Challenges and opportunities for bio-circular businesses



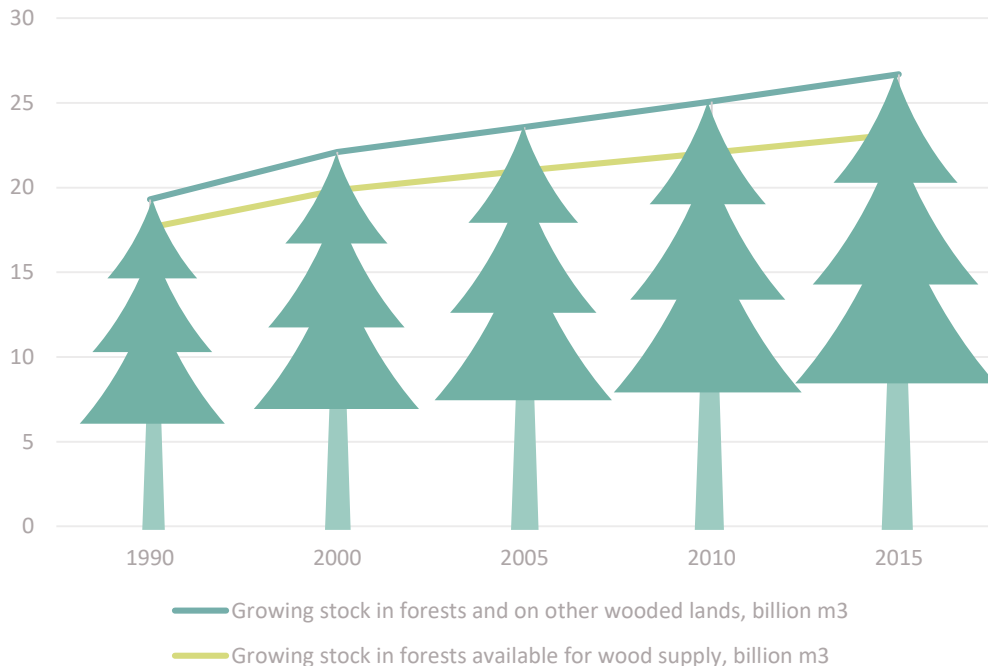
2019 CIRCULAR ECONOMY STAKEHOLDER
CONFERENCE

WORKSHOP - Bio-circular villages: a recipe for
rural prosperity

21 March 2019

European forests are increasing...

Development of EU forest stock



Comprehensive instruments and regulations in place to safeguard the SFM principles

At ground level, i.e.

- Forest management plans or equivalents (77%)
 - Forest certification, e.g. PEFC or FSC (55-65%)

At regional and national level, i.e.

- Forest laws and other complementary regulations as nature or forest protection regulations, public procurement regulations, or land use and related planning acts
- National Forest Inventories

At EU level, i.e.

- EU Forest Strategy
- EU Timber Regulation
- LULUCF Regulation
- CAP and Rural Development
- Birds and Habitats Directive, incl Natura 2000
- Biodiversity Strategy
- Water Framework Directive
- Renewable Energy Directive
- ILUC Directive
- Regulation on Invasive Alien Species
- Directive on Marketing of Forest Reproductive Material

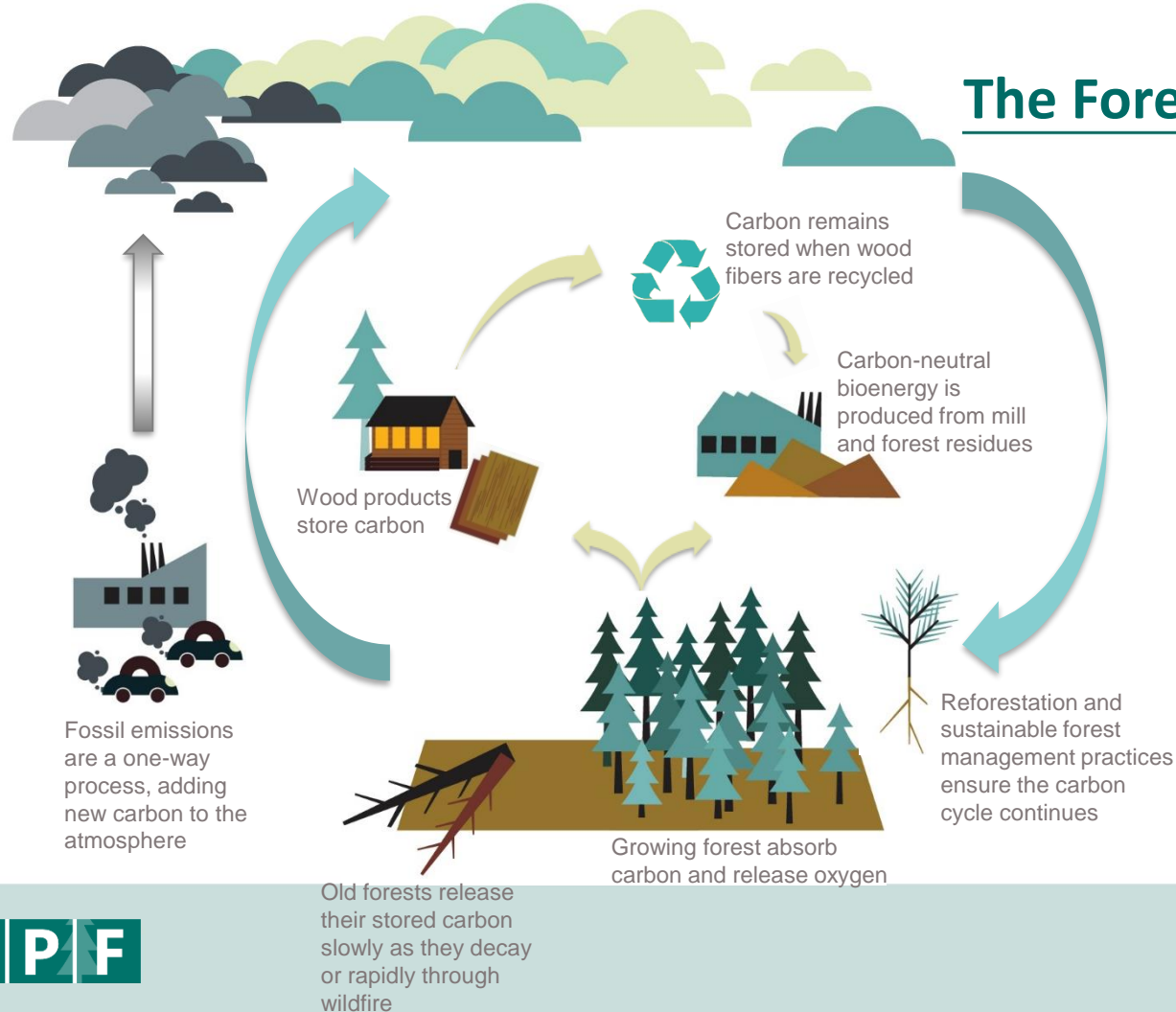
Pan-European level

- Forest Europe SFM definition, Criteria & Indicators for SFM, principle guidelines, SoEF, LBA

Global

- Convention on Biological Diversity (CBD), Nagoya Protocol
- Convention on International Trade in Endangered Species (CITES)

The Forest Carbon Cycle

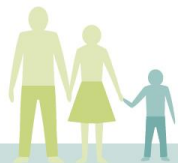


THE TRIPLE BENEFIT

- ❖ **SEQUESTER** CO₂ in growing forests
- ❖ **STORE** carbon in products
- ❖ **SUBSTITUTE** fossil fuels and energy-intensive materials



Confederation of European Forest Owners



Thank you!



Confederation of European Forest Owners

Rue du Luxembourg 66

B-1000 Brussels

+32 2 239 300

meri.siljama@cepf-eu.org

www.cepf-eu.org

21 March 2019

EU Forest Policy: a complex scattered puzzle

