



Home Appliances, Material Flows & Circularity

Paolo Falcioni
Date: 20/02/2018



CECED has 20 Direct Members, which have at least one manufacturing facility in Europe and a direct presence in at least four European countries. All Direct Members are also a member of the relevant CECED National Associations in more than 50% of the countries in which the company has direct operations. CECED Direct Members

subscribe to CECED's statutes, by-laws, all industry-established agreements, and are signatories of the CECED Code of Conduct on Corporate Social Responsibility to promote fair and sustainable standards for working conditions, social compliance and environmental performance.

Arçelik A.Ş.

ARISTON
THERMO GROUP

B/S/H/

CANDY

DAIKIN

DeLonghi

dyson

Electrolux

**GROUPE
ATLANTIC**

gorenje

LG

LIEBHERR

Miele

PHILIPS

Panasonic

SAMSUNG

SEB

VESTEL

VORWERK

Whirlpool
CORPORATION

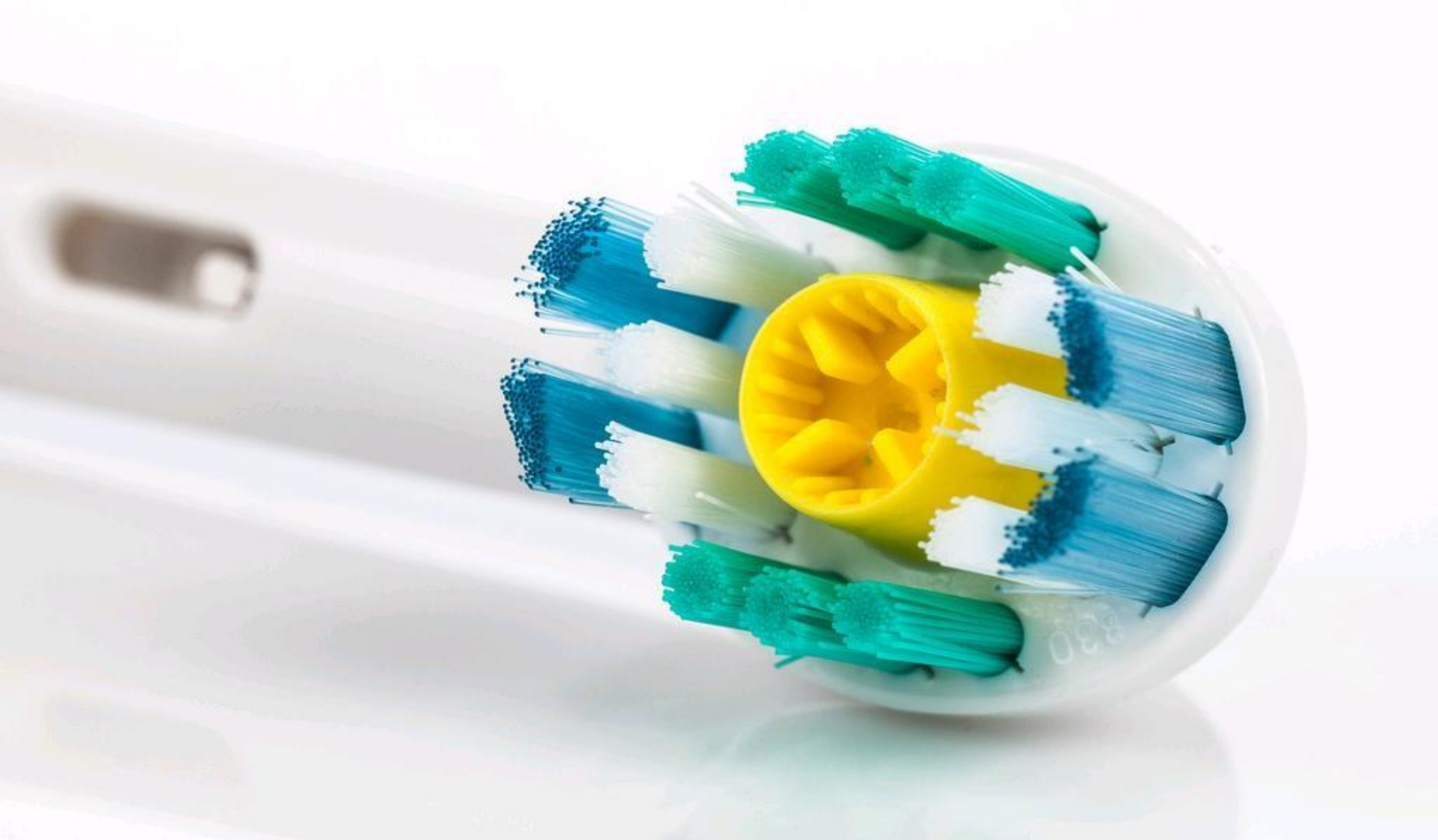
Direct members



National Associations



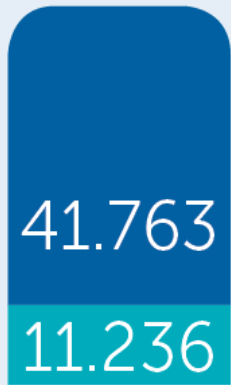
Large domestic appliances



Small domestic appliances



Home Comfort appliances



€ 52.999 m

Direct & indirect value
added to GDP



€ 47.640 m

Turnover in the EU

Contribution in 2015 & 2016



255.387

Number of direct
employees



889.192

Number of direct
& indirect employees

Nearly 1 million jobs in 2016



Circular from the outset



Circularity is a journey



Many possible routes in the journey



Supported by successful legislation



Ecodesign legislation
built on solid foundations



Waste legislation to support
raw material recovery



WHO

WHEN

WHERE

How

Information for treatment operators

Restricted since 2006 by RoHS (I) Directive 2002/95 CE¹

82 Pb Lead 0,1%	80 HG Mercury 0,1%	48 Cd Cadmium 0,01%	Cr⁶⁺ Hexavalent Chromium 0,1%
	0,1% ¹ PBBs Polybrominated biphenyls	0,1% PBDEs Polybrominated diphenyl ethers	

Will be restricted as of 22 July 2019 pursuant to Directive 2015/863/EU

0,1% DEHP Bis (2-ethylhexyl) phthalate	0,1% BBP Butyl benzyl phthalate	0,1% DBP Dibutyl phthalate	0,1% DiBP Diisobutyl phthalate
---	--	---	---

Chemical & Substances Legislation



Streamlining chemical, product and waste policies to reach goals



Challenges



Constant evolution of
chemical legislation



Adaption for Recycling long after
production



Inconsistencies & overlaps
in chemical regulations



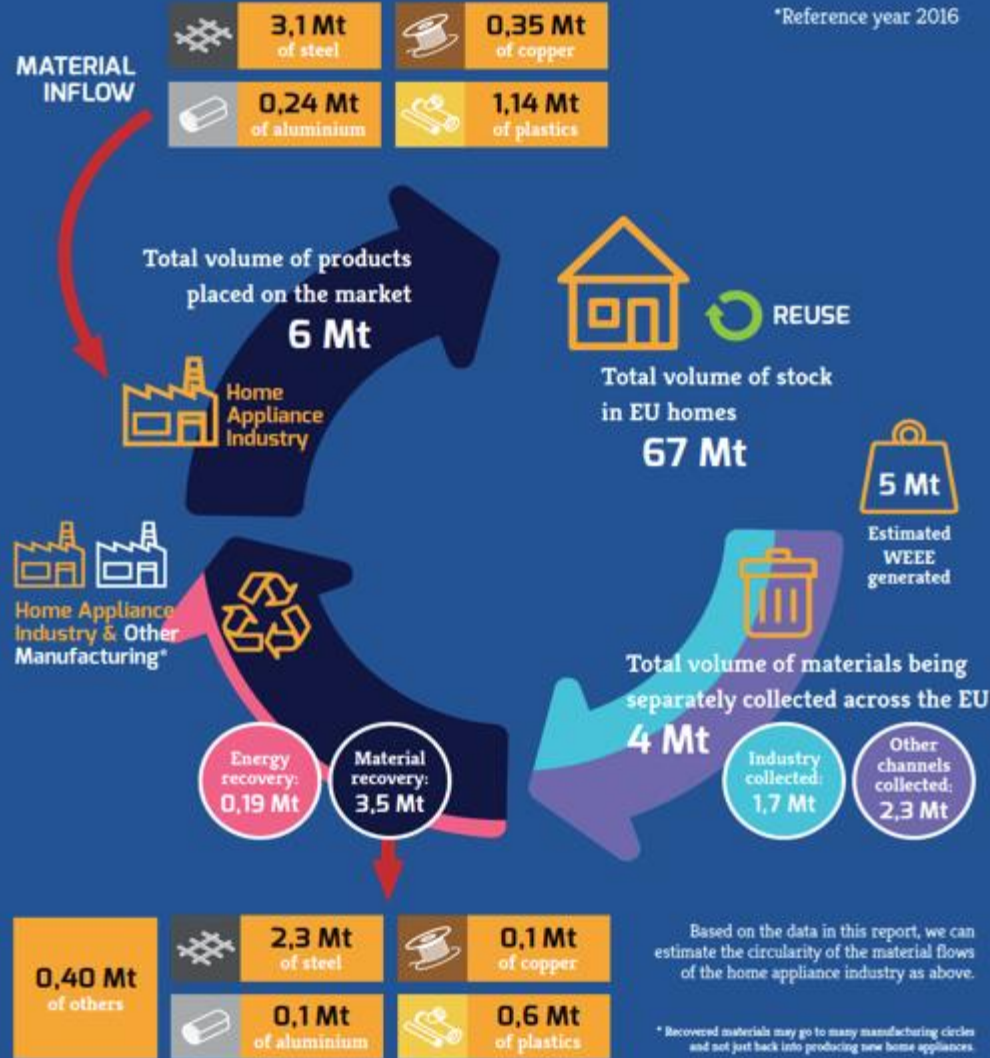
Level playing field in recycling sector



Variation in recycling techniques



Improving Material Flows



Our own analysis shows
a virtuous circle

Appliances = Saving



Balance



Circular Material Flows



Improvement in the collection and recycling of smaller appliances



Identify the fate of flows not handled by Industry



Value chain cooperation



Harmonisation and enforcement of treatment standards for WEEE across EU



Consumers have an important role



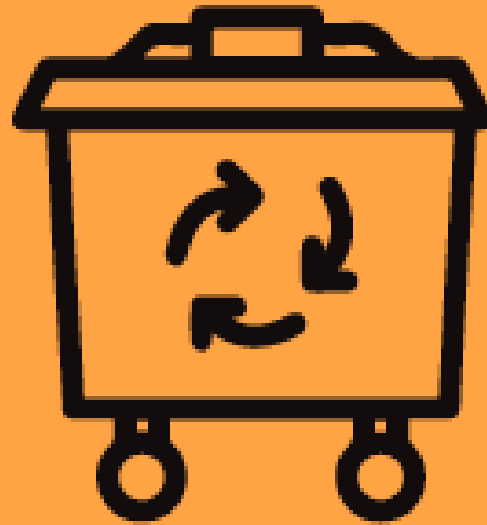
Our strategy in pictures



+



+



Circular Society



www.circularsociety.eu



Thank you

@CECED_Europe
www.ceced.eu